

PORTIONS OF SECTIONS 13, 18, 19, 23, 24, 25, 27, AND 30, TWP. 35 N., RGE'S. 4 & 5 E., W.M.

200407270083
Skiagit County Auditor
7/27/2004 Page 1 of 2 2:27PM

NOTES

- THIS SURVEY WAS PERFORMED IN THE FIELD USING TRIMBLE GPS 5700 AND 5800 RECEIVERS, AND A LEICA 1103 TOTAL STATION. DATE OF SURVEY WAS BETWEEN NOVEMBER 2003, AND MARCH 2004.
- THIS SURVEY WAS PERFORMED WITHOUT THE BENEFIT OF A CURRENT TITLE REPORT. THIS SURVEY DOES NOT PURPORT TO SHOW ALL EASEMENTS, RESTRICTIONS, RESERVATIONS, PROVISIONS, COVENANTS OR CONDITIONS WHICH MAY AFFECT THE PARCELS SHOWN HEREON.
- BASIS OF BEARING: BETWEEN WASHINGTON STATE DEPARTMENT OF TRANSPORTATION MONUMENT I.D. NO. 313, N. 560528.311, E. 1337023.041, AND MONUMENT I.D. NO. 1510, N. 552987.549, E. 1302346.857, BEARS N 77°43'53" E. COORDINATES SHOWN HEREON ARE IN U.S. SURVEY FEET, WASHINGTON STATE PLANE, NORTH ZONE COORDINATES, NAD 83/91, AND THE BEARING WAS CALCULATED FROM THESE RECORD COORDINATES.
- THIS IS A BOUNDARY SURVEY ONLY. UTILITIES WERE NOT INVESTIGATED.
- MEASUREMENTS SHOWN HEREON ARE GRID DISTANCES, US SURVEY FEET, WASHINGTON STATE PLANE, NORTH ZONE, NAD 83/91, FOR GROUND DISTANCES DIVIDE DISTANCES SHOWN HEREON BY A COMBINED SCALE FACTOR OF .999965490.
- THE SOFTWARE USED TO REDUCE GPS DATA WAS TRIMBLE GEOMATICS OFFICE, VERSION 1.62. FIELD DATA WAS REDUCED USING STARNET1 VERSION 6.0.19.
- ELEVATIONS SHOWN HEREON ARE IN US SURVEY FEET NAVD 88 DATUM, BASED ON GPS AND LEVEL TIES TO WASHINGTON STATE DEPARTMENT OF TRANSPORTATION MONUMENTS I.D. NO. 1509, 1511 AND 1516 AND ALSO TO U.S.G.S. MONUMENT "93 RS".

LEGEND

- ✚ DENOTES FOUND OR RESET SECTION CORNER AS NOTED HEREON.
- ✚ DENOTES FOUND OR RESET QUARTER CORNER AS NOTED HEREON.
- ⊙ DENOTES CENTER OF SECTION AS NOTED HEREON.
- ⊙ DENOTES FOUND MONUMENT AS SHOWN HEREON.
- ⊙ DENOTES FOUND MONUMENT AS SHOWN HEREON.
- ⊙ DENOTES 1/2" REBAR WITH RED PLASTIC CAP MARKED "9343 SKODJUE"



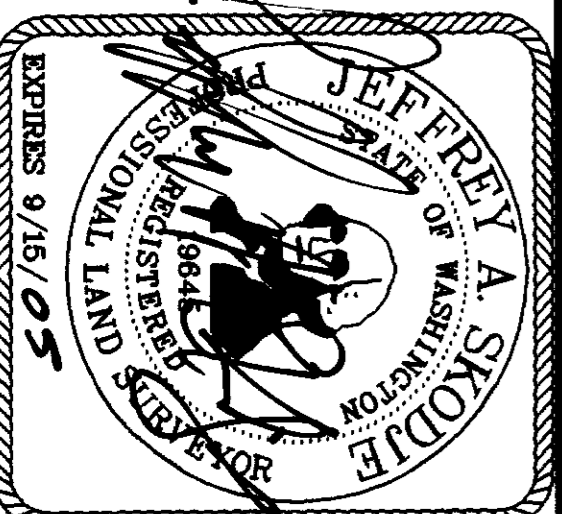
SURVEYOR'S CERTIFICATE

THIS MAP CORRECTLY REPRESENTS A SURVEY MADE BY ME OR UNDER MY DIRECTION IN CONFORMANCE WITH THE REQUIREMENTS OF THE SURVEY RECORDING ACT, AT THE REQUEST OF

CITY OF SEDRO WOOLLEY

JEFFREY A. SKODJUE, P.L.S.

CERTIFICATE NO. 19645 DATE 7/27/04



AUDITOR'S CERTIFICATE

FILED FOR RECORD THIS 24th DAY OF JULY 2004, AT 2:27 PM, AT THE REQUEST OF LEONARD, BOUDINOT AND SKODJUE INC. UNDER AUDITOR'S FILE NUMBER

Norma Boudinot, Skagit County Auditor

Tom Frawley, Deputy

RECORD OF SURVEY FOR

CITY OF SEDRO WOOLLEY

PORTIONS OF SECTIONS 13, 18, 19, 23, 24, 25, 27, AND 30, TWP. 35 N., RGE'S. 4 & 5 E., W.M.

LEONARD, BOUDINOT AND SKODJUE, INC. CIVIL ENGINEERS AND LAND SURVEYORS

603 SOUTH FIRST ST., MOUNT VERNON, WA 98273 (360) 356-5751

DWN BY: MCJ DATE: MARCH 2003 FIELD BOOK: 635, 637

SCALE: 1" = 1000' JOB NO: 03166

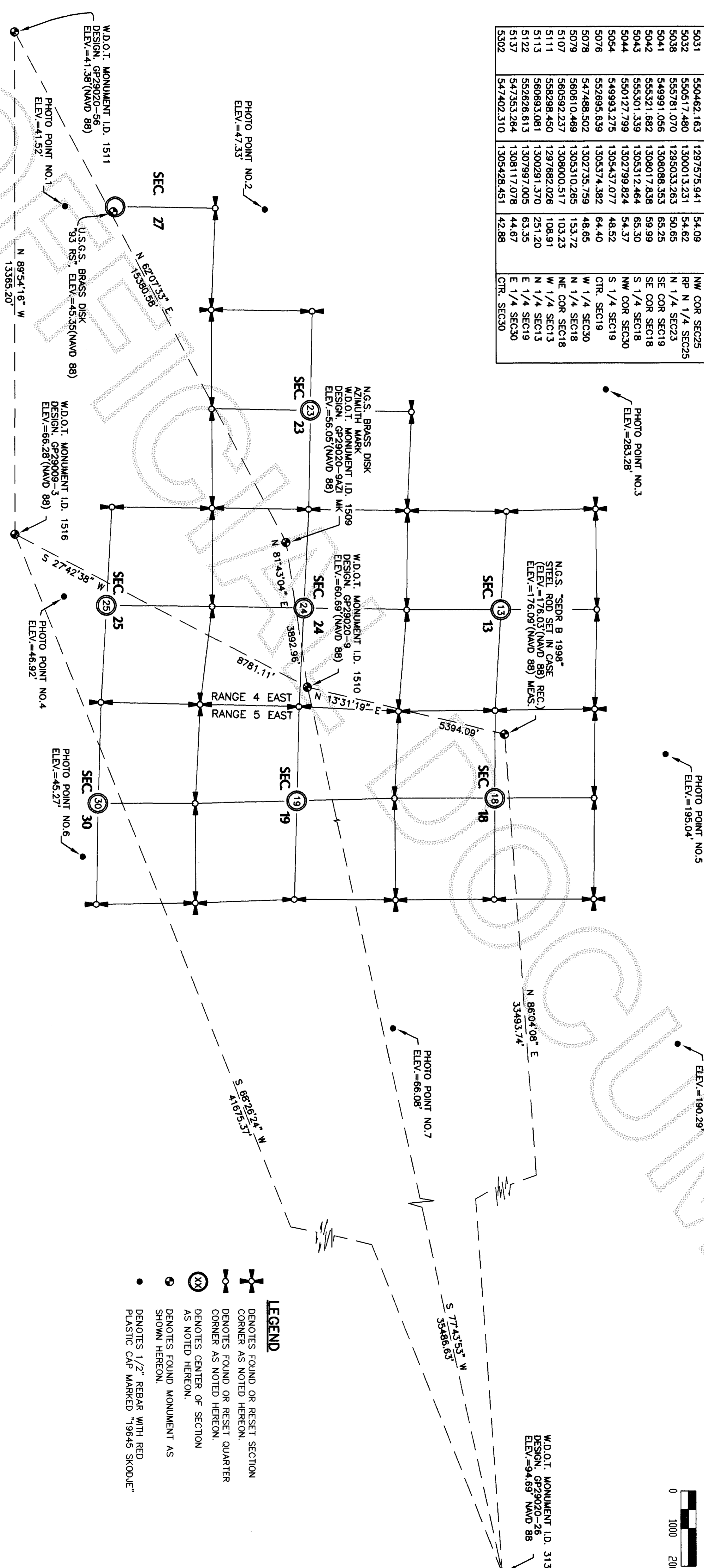
SHEET 1 OF 2

PORTIONS OF SECTIONS 13, 18, 19, 23, 24, 25, 27, AND 30, TWP. 35 N., RGE'S. 4 & 5 E., W.M.

SECTION CORNERS, PHOTO POINTS AND GPS CONTROL POINT COORDINATES

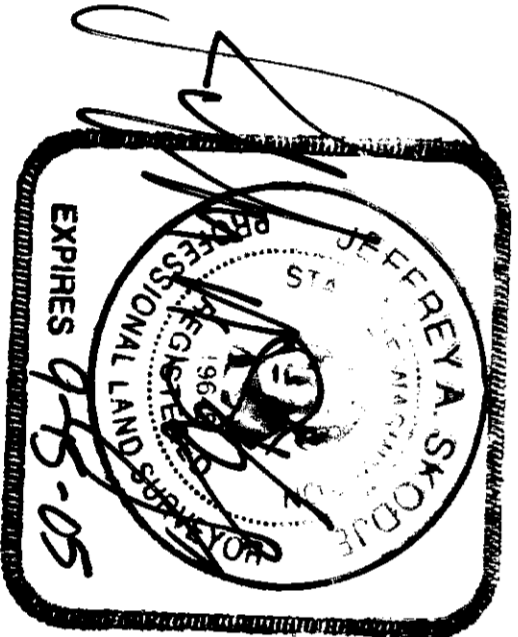
Node ID	Northing	Easting	Elevation	Description
5003	547792.856	1297540.167	37.12'	W 1/4 SEC. 25
5004	560631.536	1302938.161	207.44	NW COR SEC18
5006	560866.216	1297616.846	273.94	NW COR SEC13
5008	555661.022	1297656.948	59.15	SW COR SEC13
5009	555638.520	1300287.188	61.73	E 1/4 SEC13
5010	557950.160	1300803.705	68.71	E 1/4 SEC18
5013	555414.788	1302989.588	64.51	SW COR SEC18
5016	557985.025	1302971.450	125.30	W 1/4 SEC18
5020	552761.822	1302863.780	59.17	W 1/4 SEC19
5025	553033.739	1297618.224	56.24	W 1/4 SEC24
5026	553143.418	1292342.209	49.62	W 1/4 SEC23
5027	550566.483	1289594.018	49.16	W 1/4 SEC27
5028	547901.120	1289553.307	46.44	CR. SEC 27
5029	550457.674	1292296.795	44.85	SW COR SEC23
5030	550462.163	1294941.258	51.18	S 1/4 SEC23
5031	550517.480	1297575.941	54.09	NW COR SEC25
5032	555781.070	1300013.231	54.62	RP N 1/4 SEC25
5038	549991.056	1308083.553	65.25	N 1/4 SEC23
5041	555321.682	1308017.838	59.99	SE COR SEC19
5042	555301.339	1305312.464	65.30	SE COR SEC18
5043	550127.799	1302799.824	54.37	NW COR SEC30
5044	549993.275	1305437.077	48.52	S 1/4 SEC19
5076	552895.639	1305374.382	64.40	CR. SEC19
5078	547488.502	1302735.759	48.65	W 1/4 SEC30
5079	560610.469	1305310.265	153.72	N 1/4 SEC18
5107	560592.237	1308000.517	103.23	NE COR SEC18
5111	558296.450	1297682.028	106.91	W 1/4 SEC13
5113	560893.081	1300291.370	251.20	W 1/4 SEC13
5122	552826.613	1307997.005	63.35	E 1/4 SEC19
5137	547353.264	1308117.078	44.67	E 1/4 SEC30
5302	547402.310	1305428.451	42.88	CR. SEC30

Node ID	Northing	Easting	Elevation	Description
201	546562.816	1289534.104	41.52	PHOTO PNT. NO. 1
202	551883.098	1289632.946	47.33	PHOTO PNT. NO. 2
203	560848.149	1294444.046	283.28	PHOTO PNT. NO. 3
204	546509.370	1299916.793	46.92	PHOTO PNT. NO. 4
205	562512.762	1304144.526	195.04	PHOTO PNT. NO. 5
206	546898.791	1306848.803	45.25	PHOTO PNT. NO. 6
207	555241.354	1311430.771	66.08	PHOTO PNT. NO. 7
208	562812.467	1311858.011	190.29	PHOTO PNT. NO. 8
209	560528.311	1337023.041	94.94	MON 313
210	552426.776	1298494.493	56.05	MON 1509
211	552987.549	1302346.857	60.69	MON 1510
212	545235.888	1284898.411	41.38	MON 1511
213	545213.569	1298263.592	66.28	BM 1516
214	558232.116	1303608.100	176.09	MON SEDR B



LEGEND

- ⊕ DENOTES FOUND OR RESET SECTION CORNER AS NOTED HEREON.
- ⊙ DENOTES FOUND OR RESET QUARTER CORNER AS NOTED HEREON.
- ⊗ DENOTES CENTER OF SECTION AS NOTED HEREON.
- ⊙ DENOTES FOUND MONUMENT AS NOTED HEREON.
- ⊙ DENOTES FOUND MONUMENT AS SHOWN HEREON.
- ⊙ DENOTES 1/2" REBAR WITH RED PLASTIC CAP MARKED "19645 SKODJE"



RECORD OF SURVEY
FOR
CITY OF SEDRO WOOLLEY
SKAGIT COUNTY, WASHINGTON

PORTIONS OF SECTIONS 13, 18, 19, 23, 24, 25, 27, AND 30, TWP. 35 N., RGE'S. 4 & 5 E., W.M.

LEONARD, BOUDINOT and SKODJE, INC.
CIVIL ENGINEERS AND LAND SURVEYORS
603 SOUTH FIRST ST., MOUNT VERNON, WA 98273 (360)336-5751

DWN BY: MCJ DATE: MARCH 2003
FIELD BOOK: XXXXXXXXXXXXX

SCALE: 1" = 2000'
JOB NO: 03166

SHEET 2 OF 2