

7/8/11

**CONSTRUCTION SET**

DESIGNED BY  
CITY  
DRAWN BY  
GKG  
CHECKED BY  
CITY



**REICHHARDT & EBE**  
ENGINEERING, INC.  
CONSULTING ENGINEERS  
813 Metcalf Street Ph (360) 855-1713  
Sedro-Woolley, Washington 98284 Fax (360) 855-1164

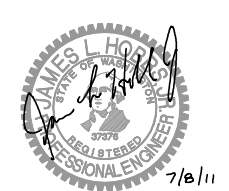
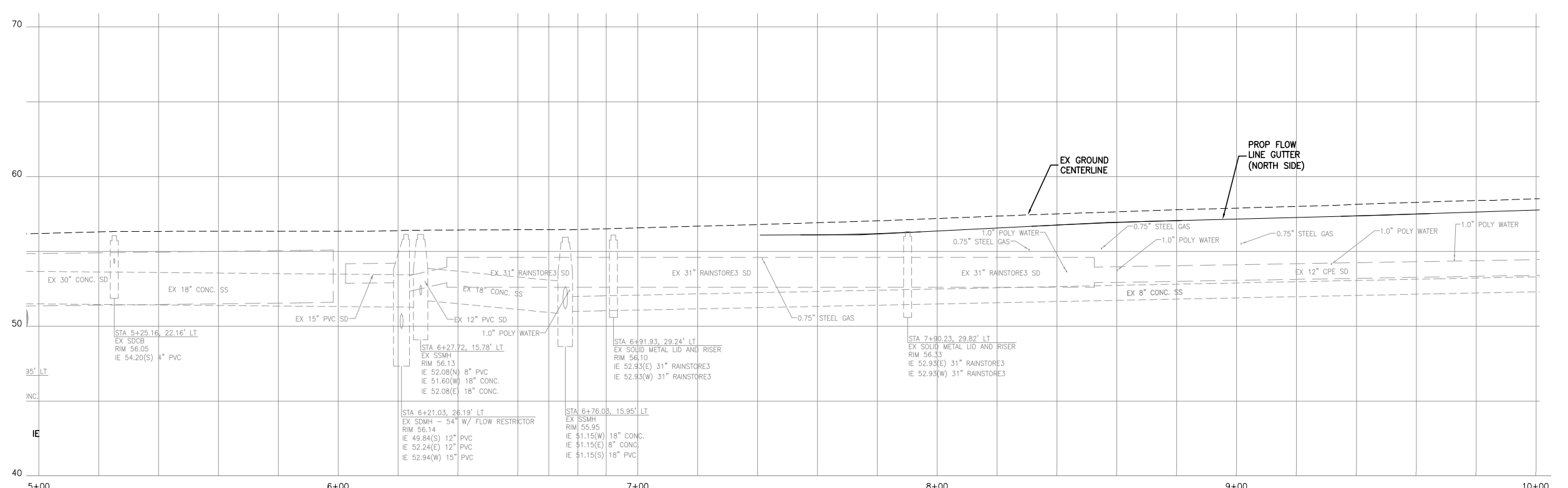
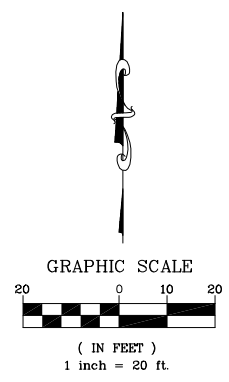
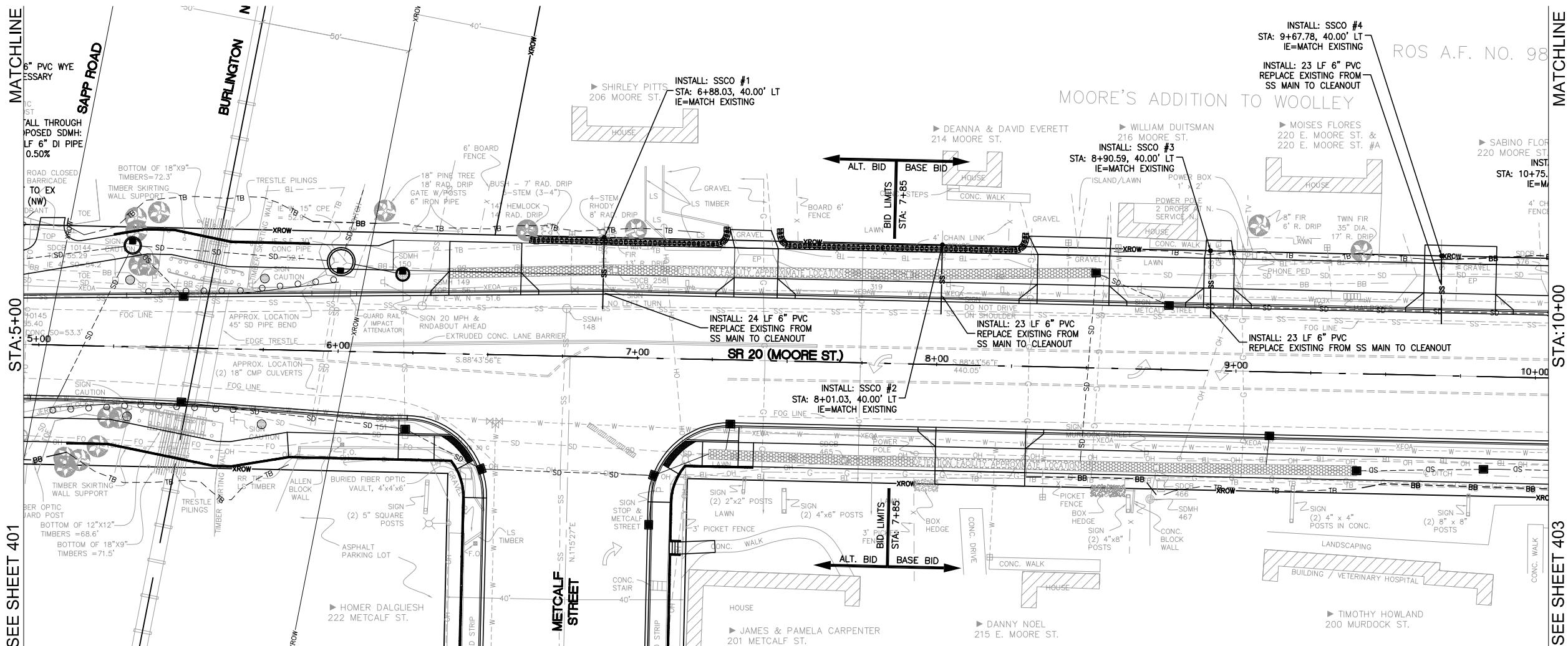
NO.	DATE	DESCRIPTION	BY

**CITY OF SEDRO-WOOLLEY**  
325 METCALF STREET  
SEDRO-WOOLLEY, WA 98284

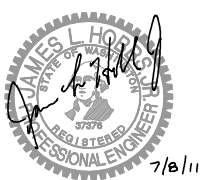
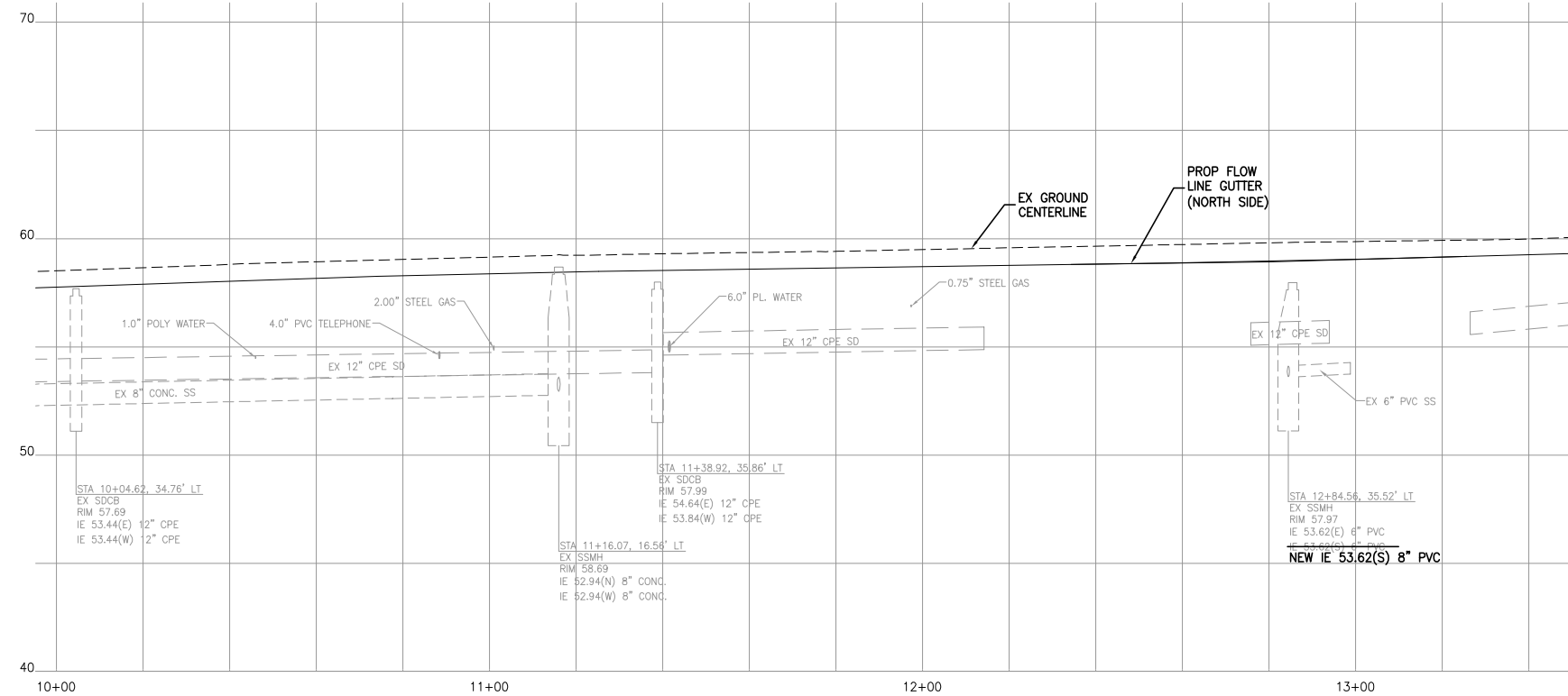
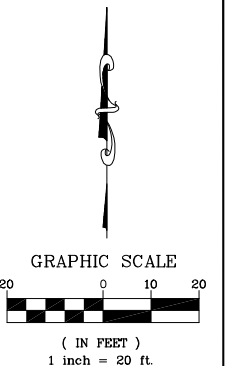
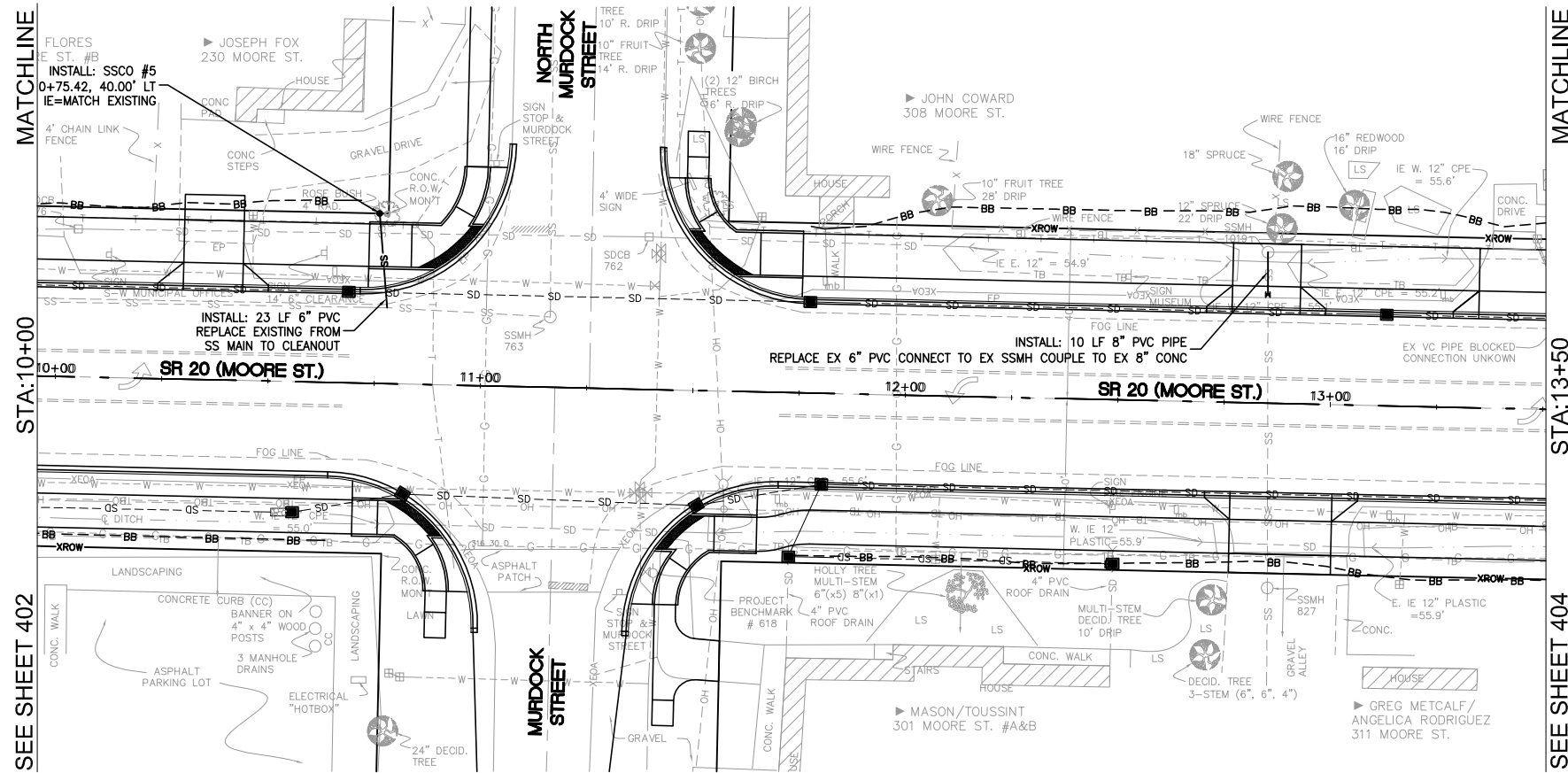
**SR 20 WIDENING**  
BICYCLE/PEDESTRIAN IMPROVEMENTS PROJECT  
SEDRO-WOOLLEY, WA

DWG CITY OF SEDRO-WOOLLEY  
SANITARY SEWER IMPROVEMENTS  
JOB# 09022.2  
SCALE H: 1"=20' V: 1"=4'

DATE 7/8/11  
SHEET 401



<b>CONSTRUCTION SET</b>	DESIGNED BY CITY	<b>REICHHARDT &amp; EBE</b> ENGINEERING, INC. CONSULTING ENGINEERS 813 Metcalf Street Sedro-Woolley, Washington 98284 Ph (360) 855-1713 Fax (360) 855-1164	NO.	DATE	DESCRIPTION	BY	CITY OF SEDRO-WOOLLEY 325 METCALF STREET SEDRO-WOOLLEY, WA 98284	<b>SR 20 WIDENING</b> BICYCLE/PEDESTRIAN IMPROVEMENTS PROJECT SEDRO-WOOLLEY, WA	DWG CITY OF SEDRO-WOOLLEY SANITARY SEWER IMPROVEMENTS	DATE 7/8/11
	DRAWN BY GKG								CHECKED BY CITY	JOB# 09022.2

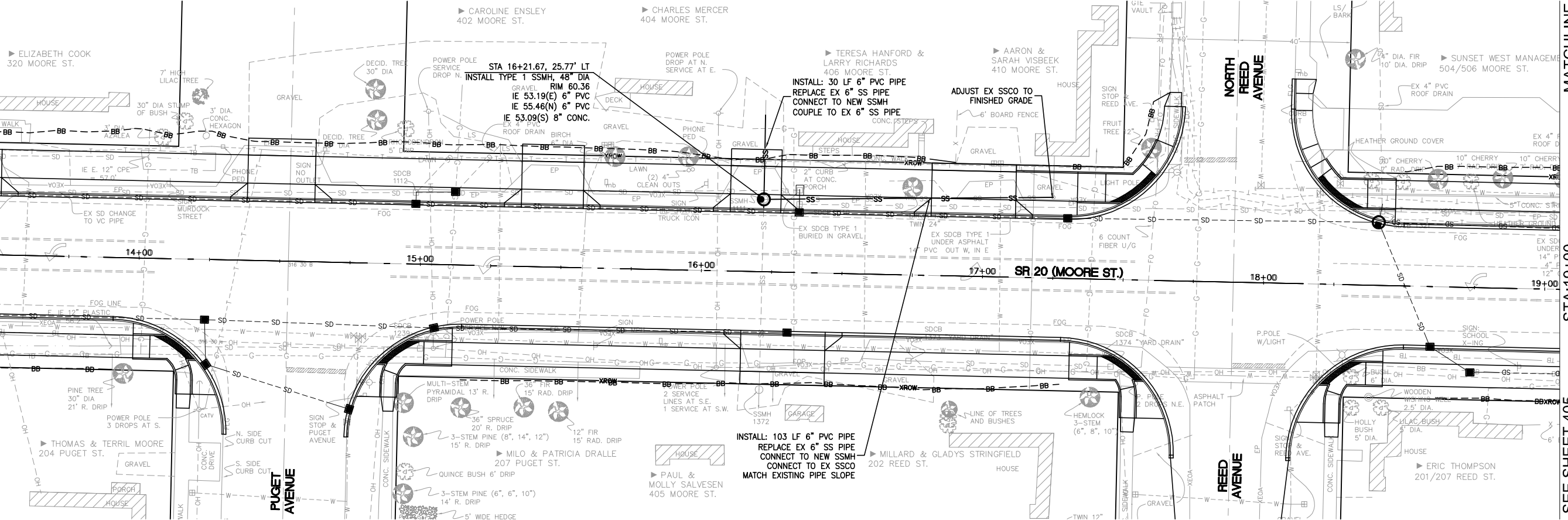


<b>CONSTRUCTION SET</b>	DESIGNED BY CITY	<b>R&amp;E</b> <i>REICHHARDT &amp; EBE</i> ENGINEERING, INC. CONSULTING ENGINEERS 813 Metcalf Street Sedro-Woolley, Washington 98284 Ph (360) 855-1713 Fax (360) 855-1164	NO.	DATE	DESCRIPTION	BY	CITY OF SEDRO-WOOLLEY 325 METCALF STREET SEDRO-WOOLLEY, WA 98284	SR 20 WIDENING BICYCLE/PEDESTRIAN IMPROVEMENTS PROJECT SEDRO-WOOLLEY, WA	DWG CITY OF SEDRO-WOOLLEY SANITARY SEWER IMPROVEMENTS	DATE 7/8/11
	DRAWN BY GKG						CHECKED BY CITY	JOB# 09022.2	SCALE H: 1"=20' V: 1"=4'	SHEET 403

MATCHLINE

STA:13+50

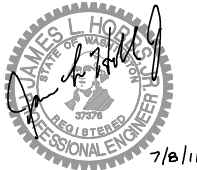
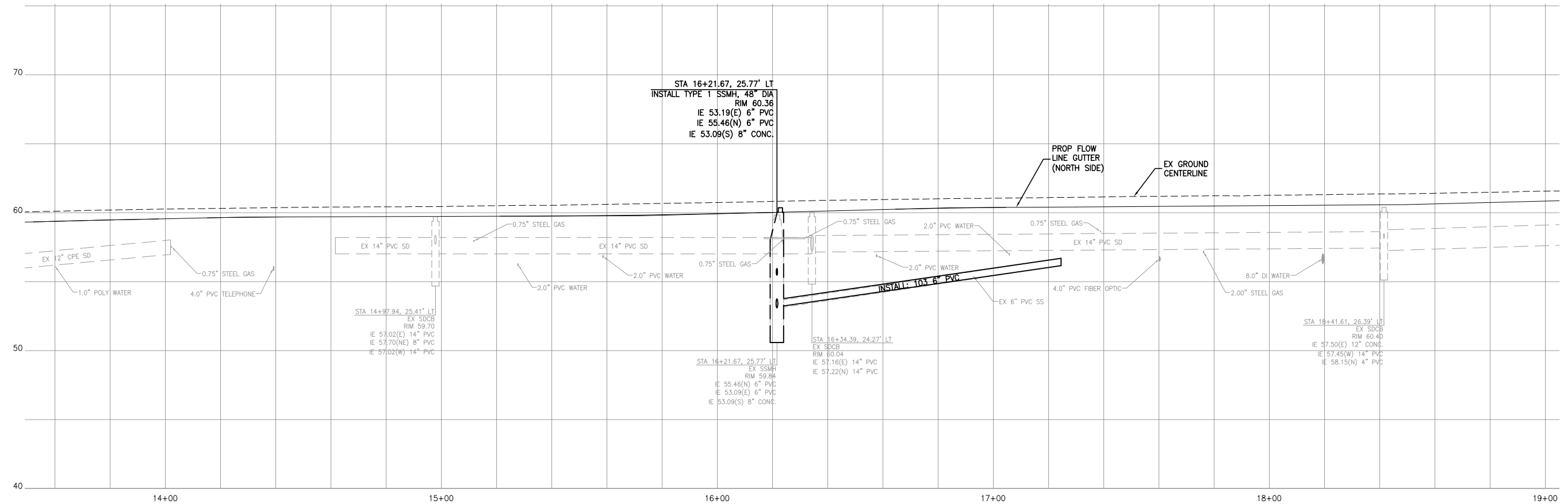
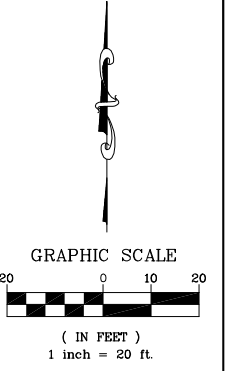
SEE SHEET 403



MATCHLINE

STA:19+00

SEE SHEET 405



7/8/11

**CONSTRUCTION SET**

DESIGNED BY CITY  
DRAWN BY GKG  
CHECKED BY CITY



**REICHHARDT & EBE**  
ENGINEERING, INC.  
CONSULTING ENGINEERS  
813 Metcalf Street Sedro-Woolley, Washington 98284 Ph (360) 855-1713 Fax (360) 855-1164

NO.	DATE	DESCRIPTION	BY

CITY OF SEDRO-WOOLLEY  
325 METCALF STREET  
SEDRO-WOOLLEY, WA 98284

**SR 20 WIDENING**  
BICYCLE/PEDESTRIAN IMPROVEMENTS PROJECT  
SEDRO-WOOLLEY, WA

DWG CITY OF SEDRO-WOOLLEY  
SANITARY SEWER IMPROVEMENTS  
JOB# 09022.2 SCALE H:1"=20' v:1"=4'

DATE 7/8/11  
SHEET 404

