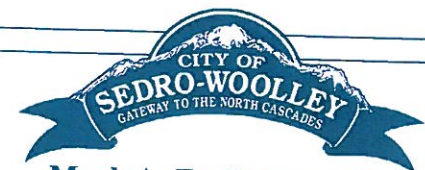
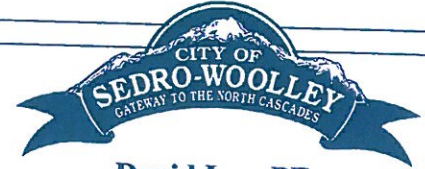


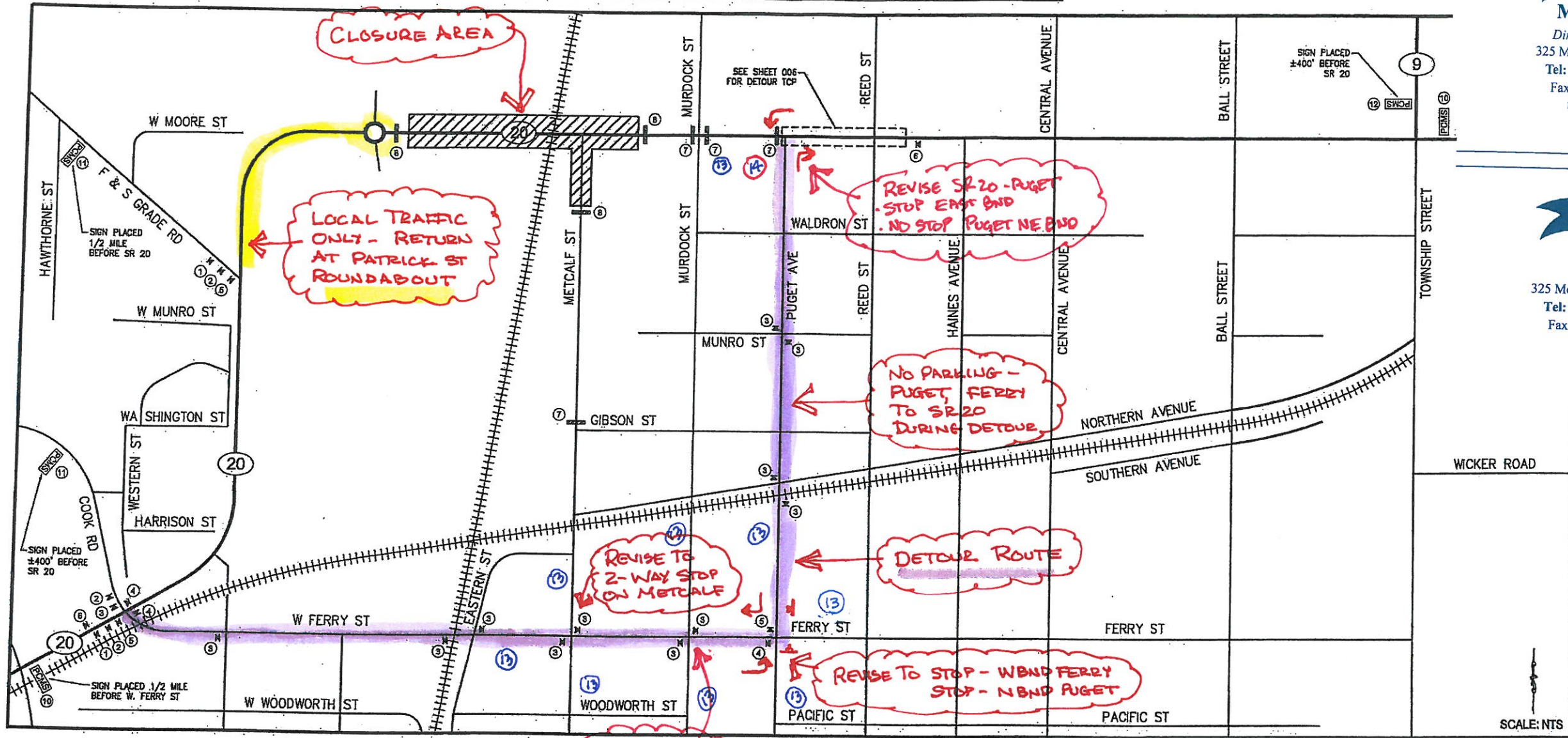
# SR 20 FULL CLOSURE (BID ALT. 1)



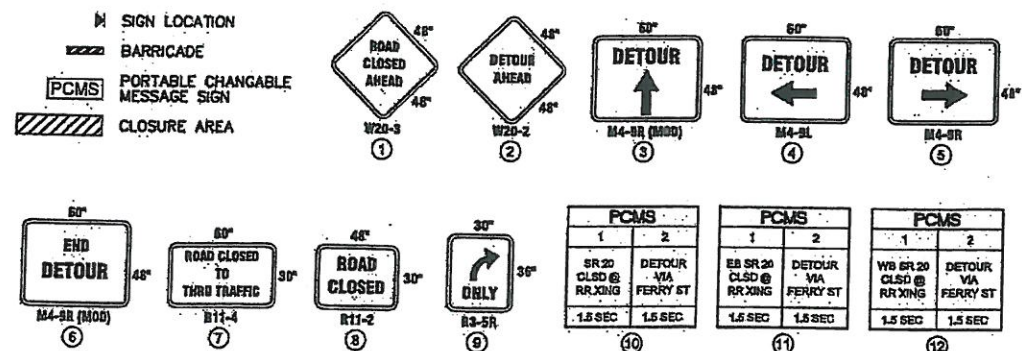
**Mark A. Freiberger, PE**  
 Director of Public Works/City Engineer  
 325 Metcalf Street • Sedro-Woolley, WA 98284  
 Tel: 360-855-0771 • Direct: 360-855-9933  
 Fax: 360-855-0733 • Cell: 360-661-6445  
 mfreiberger@ci.sedro-woolley.wa.us



**David Lee, PE**  
 Assistant City Engineer  
 325 Metcalf Street • Sedro-Woolley, WA 98284  
 Tel: 360-855-0771 • Direct: 360-855-3219  
 Fax: 360-855-0733 • Cell: 360-661-6469  
 dlee@ci.sedro-woolley.wa.us



## DETOUR LEGEND



## GENERAL NOTES

- ROAD CLOSURE SCHEDULE FOR SR 20 SHALL BE SUBMITTED TO WSDOT 10 DAYS PRIOR TO CLOSURE.
- ALL SIGNS ARE TO BE CLASS 'B' BLACK ON ORANGE UNLESS OTHERWISE NOTED.
- SR20 FULL ROAD CLOSURE SHALL ONLY BE PERMITTED UPON AWARD OF ALTERNATED BID 1
- CONTRACTOR SHALL COVER EXISTING ROAD SIGNS ALONG DETOUR ROUTE AS NEEDED.

APPROVED AS NOTED  
 6/20/11  
 WSDOT - NW Region  
 TRAFFIC OPERATIONS

STOP  
 (14)  
 BY CITY

TRAFFIC REVISION AHEAD  
 (13)  
 BY CITY

Sept. 26th  
 up to 3 weeks  
 weather permitting



BID SET

DESIGNED BY: GKG  
 DRAWN BY: GKG  
 CHECKED BY: JH  
**REICHARDT & EBE**  
 ENGINEERING, INC.  
 CONSULTING ENGINEERS  
 813 Metcalf Street  
 Sedro-Woolley, Washington, 98284  
 Ph: (360) 855-1713  
 Fax: (360) 855-1164

NO.	DATE	DESCRIPTION	BY
1	6/10	ADDITIONAL 1	UP
2	6/18	ADDITIONAL 2	EV
3	6/20	TRAFFIC CONTROL PLAN REVISIONS	GG

CITY OF SEDRO-WOOLLEY  
 325 METCALF STREET  
 SEDRO-WOOLLEY, WA 98284

SR 20 WIDENING  
 BICYCLE/PEDESTRIAN IMPROVEMENTS PROJECT  
 SEDRO-WOOLLEY, WA

DWG DETOUR PLAN		DATE
JOB#	SCALE <td>6/20/11</td>	6/20/11
090222	n/a	SHEET
		005