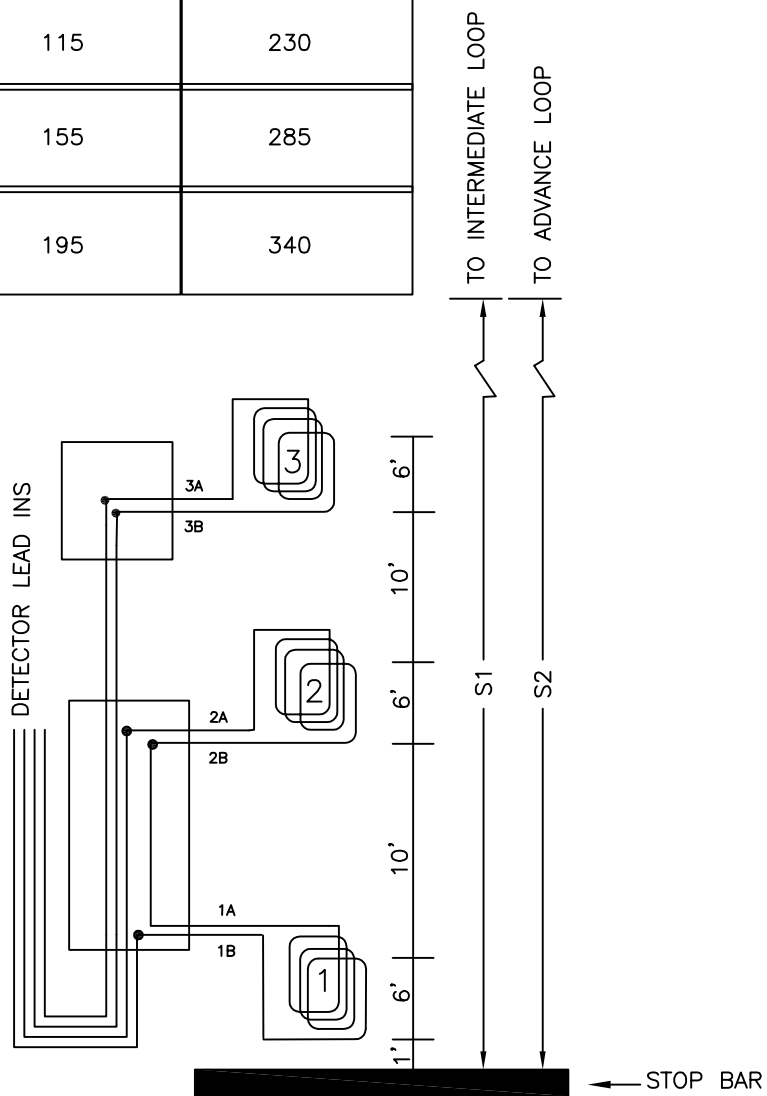


SERIES CONNECTED
 LOOP 1-2
 COUNT DETECTOR LOOP 3
 (DRAWING NOT TO SCALE)

| POSTED SPEED (MPH) | * S ₁ (FT) | * S ₂ (FT) |
|--------------------|-----------------------|-----------------------|
| 25 | -- | 105 |
| 30 | -- | 140 |
| 35 | -- | 185 |
| 40 | 115 | 230 |
| 45 | 155 | 285 |
| 50 | 195 | 340 |

NOTES:

- USE XYZ LOOP NUMBERING SCHEMATIC, WHERE:
 X IS THE PHASE #
 Y IS LANE # FROM INSIDE
 Z IS LOOP # FROM STOPBAR
- USE 3' X 25' LOOP FOR BIKE LANES
- PHASE 2 IS ALWAYS NORTHBOUND THRU DIRECTION



* ADVANCE LOOPS ARE NOT REQUIRED FOR TURNING LANES AND MINOR THROUGH LANES

