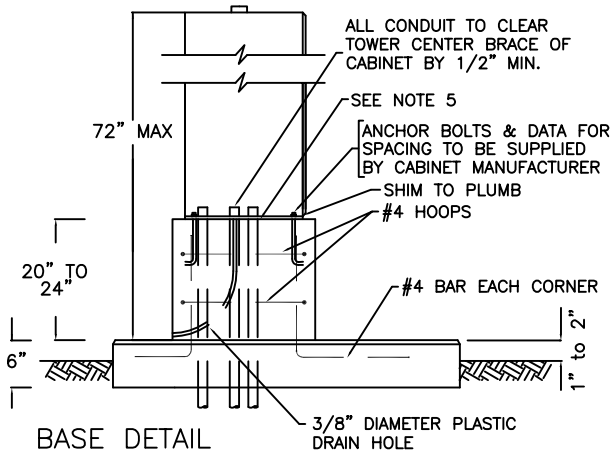
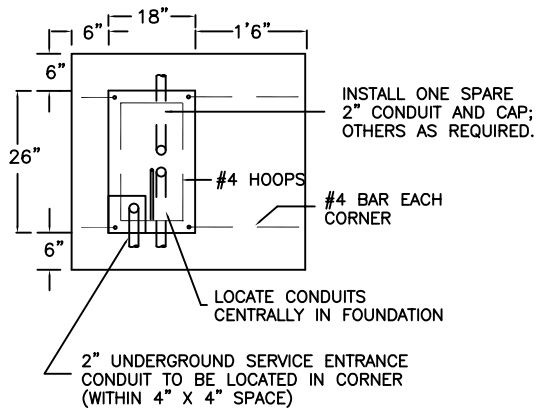


UL LISTED PER STANDARD #503
 SUITABLE FOR USE AS SERVICE ENTRANCE EQUIPMENT
 MEETS EUSERC/PSE SPEC.



BASE DETAIL



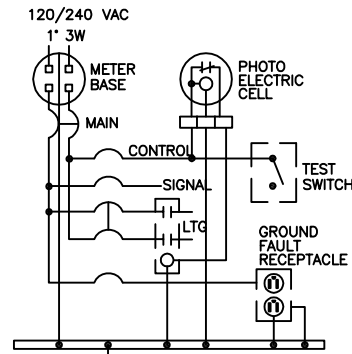
COMPONENT SCHEDULE

- ① METERBASE: 100 AMP, 4 JAW, AW #114TB, SAFETY SOCKET TYPE, 5TH JAW AT 9:00 POSITION (CONTRACTOR TO VERIFY WITH SERVING UTILITY)
- ② PANELBOARD: 120/240 VAC, 100 AMP, 1 PHASE, 3 WIRE, COPPER BUS WESTINGHOUSE BAB BOLT-ON BREAKERS:
 - 1-100/2 MAIN
 - 3-15/2 ILLUMINATION BRANCH
 - 1-50/1 SIGNAL BRANCH
 - 1-20/1 GROUND FAULT RECEPTACLE BRANCH
 - 1-15/1 CONTROL CKT BRANCH
- ③ CONTACTOR: LIGHTING RATED, 2 POLE, 120 VAC COIL, 3-REQUIRED
- ④ TERMINAL BLOCK TO REMOTE CELL
- ⑤ PHOTO-CELL BYPASS SWITCH, SPST, 15 AMP, 277 VAC
- ⑥ GROUND FAULT RECEPTACLE, 120 VAC, DUPLEX, 20A

CABINET:

NEMA 3R, PADMOUNT, 1/8TH INCH ALUMINUM CONSTRUCTION, TYPE 5052-H32 2 SCREENED AND GASKETED VENTS
 DOORS: HEAVY DUTY CONCEALED HINGES (LIFT-OFF TYPE)
 STAINLESS STEEL VAULT HANDLES, PADLOCKABLE METER DOOR
 BEST CX LOCK ON DISTRIBUTION DOOR
 POLISHED WIRE GLASS WINDOW IN METER DOOR
 CLOSED CELL NEOPRENE GASKET, CARD HOLDER

FINISH: BARE ALUMINUM (MILL FINISH) OUTSIDE, WHITE INSIDE



WIRING DIAGRAM

CABINET FOUNDATION NOTES

1. PAD MOUNT SHALL BE CLASS 3000 CONCRETE UNLESS OTHERWISE NOTED ON THE PLANS.
2. WHERE PAD MOUNT IS LOCATED IN SIDEWALK, CONSTRUCT MOUNT TOP FLUSH WITH SIDEWALK GRADE, OMITTING CHAMFER WHERE TOP AND SIDEWALK ABUT.
3. PAD MOUNT DESIGN IS TYPICAL: CONTRACTOR SHALL USE CABINET MANUFACTURER'S TO ASSURE PROPER FIT OF CABINET ON BASE WITH RESPECT TO CONDUIT PLACEMENT. CONTRACTOR SHALL SUBMIT FOR APPROVAL A PROPOSED DESIGN WITH PLAN, ELEVATION AND ANY RELEVANT SECTION VIEW.
4. CABINET SHALL BE ATTACHED WITH AASHTO M164 CHEMICALLY BONDED ANCHORS TO EXISTING PAD MOUNTS. ANCHOR INSTALLATION SHALL BE AASHTO GRADE A307 HOT-DIPPED GALVANIZED 1/2" x 8" x 2".
5. PLACE SILICONE SEAL BETWEEN THE CABINET FOUNDATION AND THE CABINET.

OTHER

CONTRACTOR SHALL COORDINATE WITH THE POWER COMPANY REGARDING THE SERVICE CONNECTION.

CONTRACTOR SHALL OBTAIN A CITY OF FEDERAL WAY ELECTRICAL PERMIT FROM THE BUILDING DEPARTMENT.

