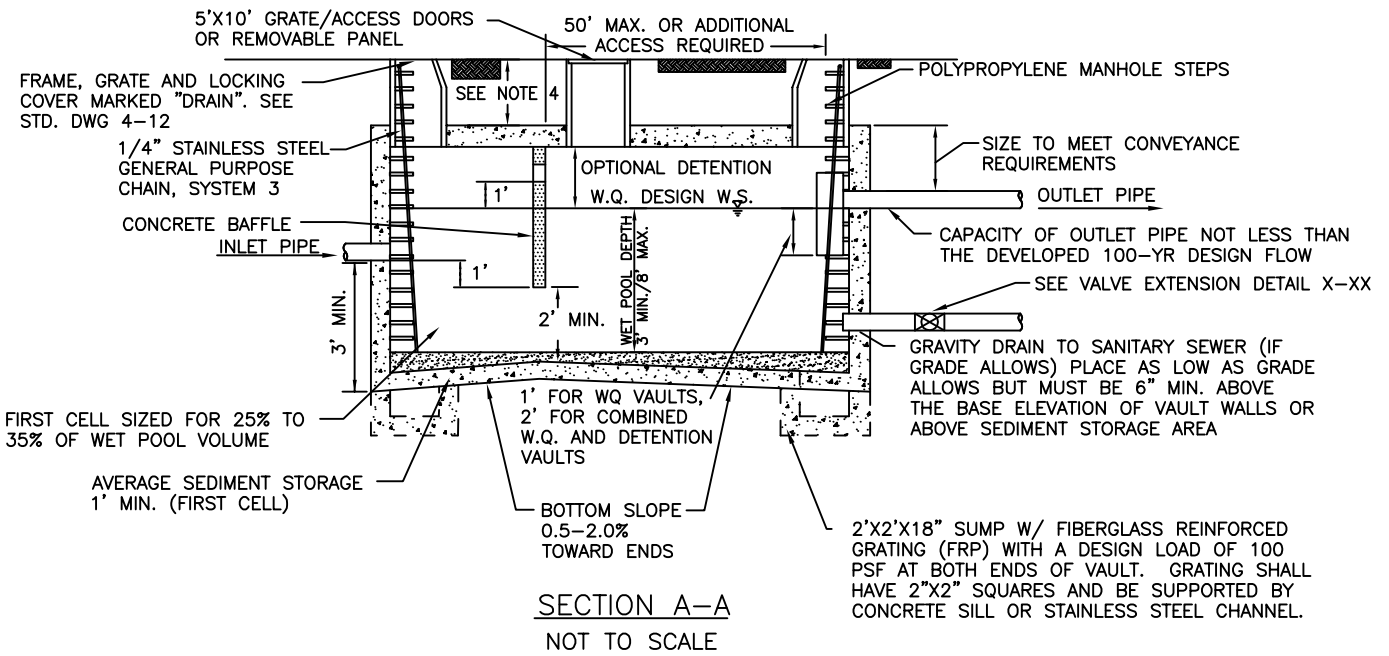
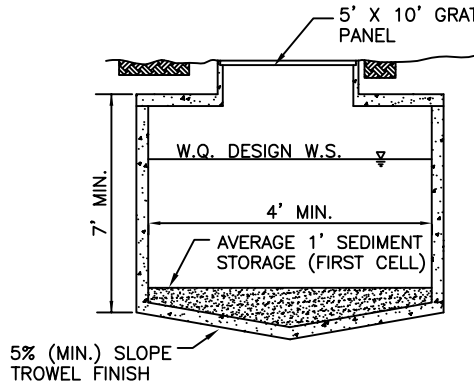


PLAN VIEW
NOT TO SCALE



SECTION A-A
NOT TO SCALE



SECTION B-B
NOT TO SCALE

NOTE:

1. ALL METAL PARTS CORROSION RESISTANT. NON-GALVANIZED PARTS PREFERRED, STAINLESS STEEL PARTS AND ALUMINUM ARE ACCEPTABLE. GALVANIZED PARTS TO HAVE ASPHALT TREATMENT 1.
2. PROVIDE WATER STOP AT ALL CAST-IN-PLACE CONSTRUCTION JOINTS.
3. PREFABRICATED VAULT SECTIONS MAY REQUIRE STRUCTURAL MODIFICATIONS TO SUPPORT 5'X10' OPENING OVER MAIN VAULT. ALTERNATELY, ACCESS CAN BE PROVIDED VIA A SIDE VESTIBULE AS SHOWN.
4. 24" DIAMETER ACCESS MAY BE USED IF DEPTH IS LESS THAN OR EQUAL TO 18", OTHERWISE 48" ECCENTRIC MANHOLE SECTION IS REQUIRED.
5. DISTANCE BETWEEN ACCESS MANHOLES AND ANY POINT WITHIN THE STRUCTURE SHALL BE NO GREATER THAN 50' MAXIMUM.



PUBLIC WORKS
DEPARTMENT

WET VAULT

DWG. NO.
4-32