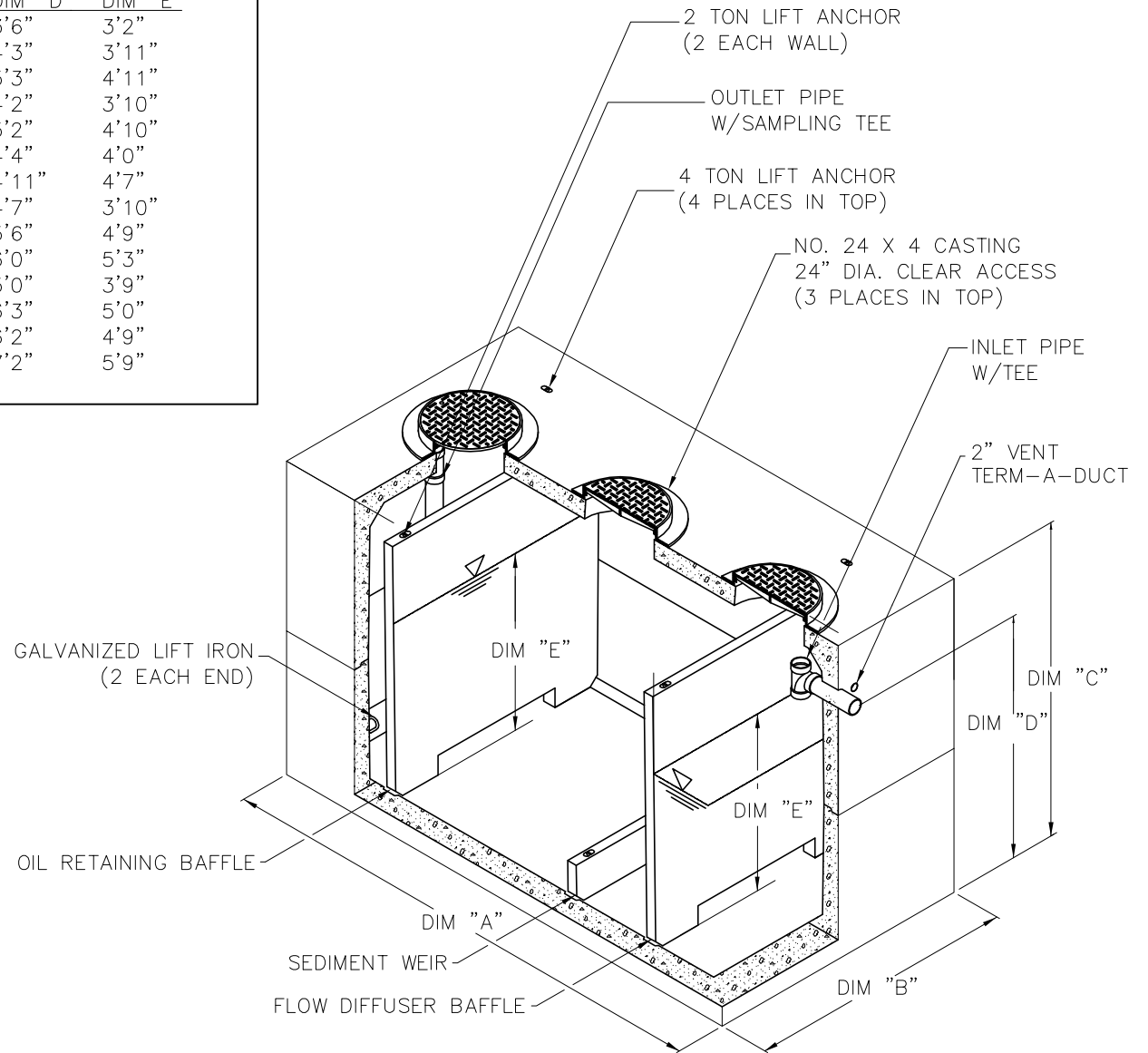


GREASE INTERCEPTOR DIMENSIONS

CAPACITY	DIM "A"	DIM "B"	DIM "C"	DIM "D"	WATER DEPTH DIM "E"
600	7'0"	4'8"	7'0"	3'6"	3'2"
750	7'0"	4'8"	7'0"	4'3"	3'11"
950	7'0"	4'8"	7'0"	5'3"	4'11"
1000	9'0"	5'0"	7'2"	4'2"	3'10"
1250	9'0"	5'0"	7'2"	5'2"	4'10"
1500	11'2"	5'8"	7'2"	4'4"	4'0"
1750	11'2"	5'8"	7'2"	4'11"	4'7"
2000	12'8"	6'8"	8'0"	4'7"	3'10"
2500	12'8"	6'8"	8'0"	5'6"	4'9"
2750	12'8"	6'8"	8'0"	6'0"	5'3"
3000	15'7"	9'7"	8'6.5"	5'0"	3'9"
4000	15'7"	9'7"	8'6.5"	6'3"	5'0"
5000	19'11"	9'11"	8'11"	6'2"	4'9"
6000	19'11"	9'11"	8'11"	7'2"	5'9"



PUBLIC WORKS  
DEPARTMENT

GREASE INTERCEPTOR  
SAMPLE DETAIL 2

DWG.  
NO. 5-9B