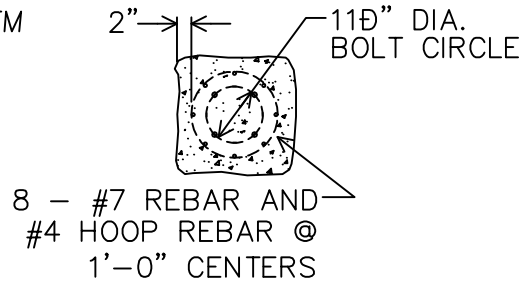
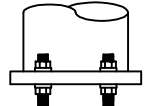
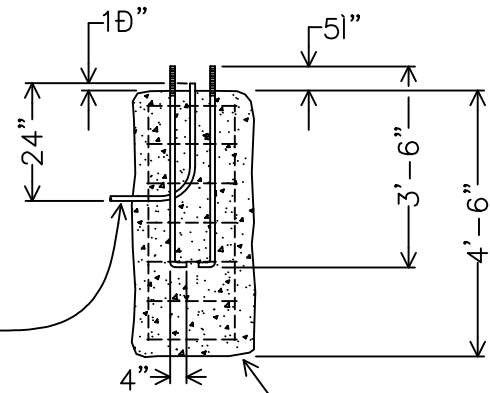


**NOTES :**

1. POLE ASSEMBLIES DESIGNED TO SUPPORT MAX. LUMINAIRE SIZE OF 1.5 SQ. FT. E.P.A. AND 60 LBS. IN A 100 MPH ISOTACH / 130 MPH GUST VELOCITY WIND.
2. 4043 FILLER WIRE USED FOR WELDING.
3. ONLY THE BASE FLANGE WELDS ARE HEAT-TREATED.
4. BASE FLANGE SHALL ACCOMODATE 11" TO 12" BOLT CIRCLE.
5. (4) 1" - 8 NC STEEL ANCHOR BOLTS ASTM A 576, AISI GRADE 1021-1046, 50,000 PSI = MIN. YIELD MEAN DIA. OF ROD STOCK 0.908 ± .011", OUT OF ROUND TOLERANCE : ± 0.012" ROLLED OR CUT THREADS PER A307, CLASS 2A, TOP 10" GALVANIZED PER ASTM A153, COMPLETE WITH (8) 1" 8NC GALVANIZED STEEL HEX NUTS & (8) 1" GALVANIZED STEEL FLAT WASHERS.



HANDHOLE (4" X 6" NOMINAL)  
NON-FLUSH TYPE, COMPLETE WITH REINFORCING FRAME ALLOY 356-T6, COVER AND S.S. HEX HD. SCREWS



1/2" - 13 NC S.S. BOLT W/ S.S. SPLIT WASHER AND S.S. FLAT WASHER

CLASS 5 (1-1/2") PORTLAND CEMENT CONCRETE (3000 psi). 3'x 3' SQUARE OR 3' DIAMETER BASE.

MOUNTING HEIGHT (See drawings 3-38, 3-42)

SHAFT LENGTH = 6'-10" less than mounting height

**SECTION THRU HANDHOLE**

