

# **ADA Advisory Group Meeting #2**

**Tuesday, December 8, 2020**

**4:00-5:00pm**

# Agenda

- Virtual Workshop Debrief
- 2020 ADA Barrier Online Survey Findings
- Current Activities Update
- Public Comments
- Next AAG Meeting

# Virtual Workshop Debrief

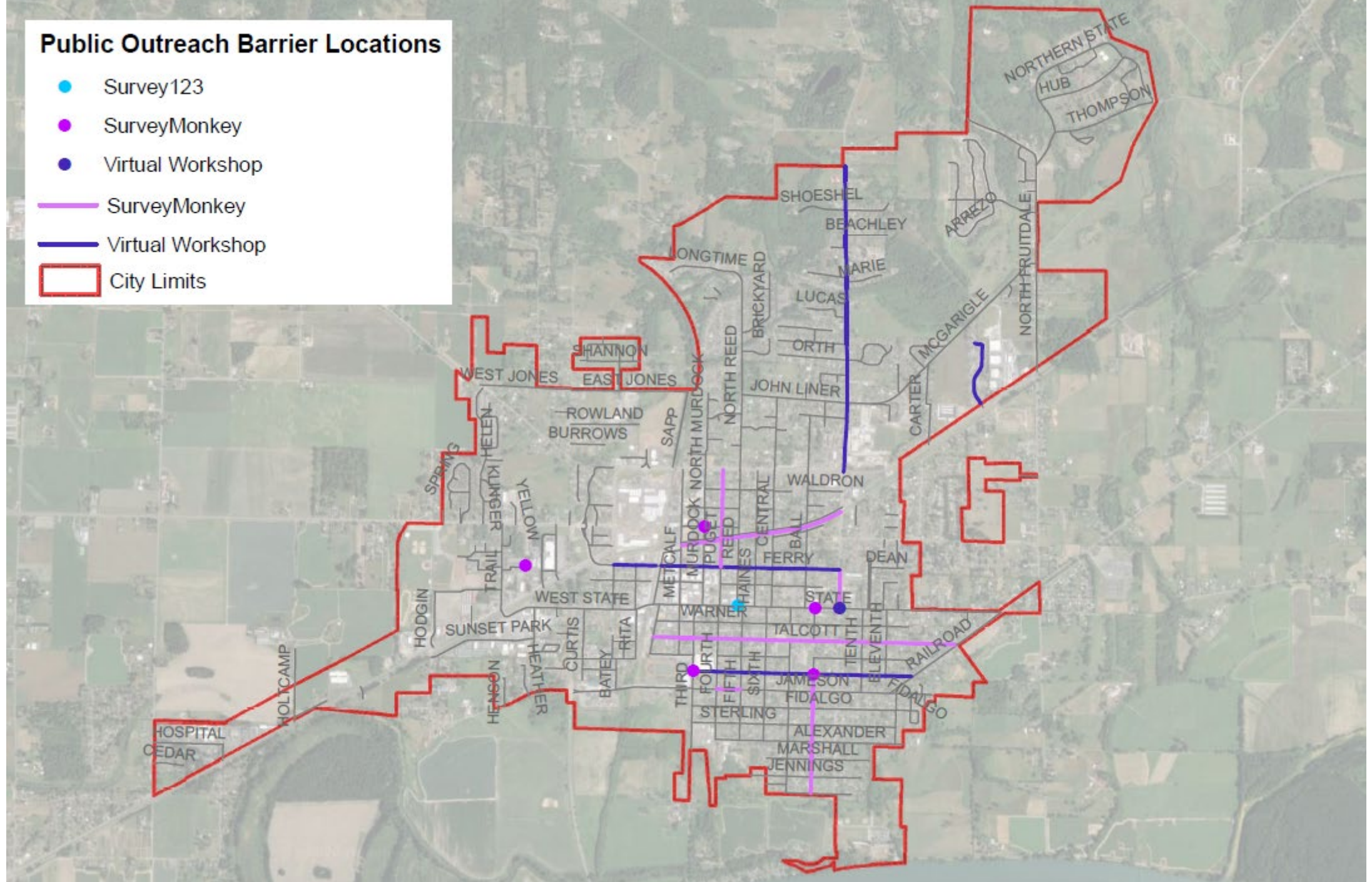
- 2 participants not affiliated with Project Team staff or AAG
- Barrier locations provided:
  - **Mobile Park and Carriage Court:** problematic sidewalks and curb ramps
  - **Highway 9 north of SR-20:** curb ramps without tactile pads
  - **Ferry Street near the old Heritage Bank:** tree roots on south side of Ferry at Puget Street
  - **State and Township:** missing curb ramps and pedestrian crossings
  - **Bennett Street:** uneven sidewalks

# Online Surveys

- **28 Responses**
  - Survey Monkey (25)
  - Survey123 (3)
- **General Observations**
  - Trail design
  - Maintenance/obstacle clearing
  - Traffic signal phasing/timing
  - Sidewalk barriers: cracks, lack of ramps, lack of sidewalks
  - Barriers in the vicinity of schools
  - Communication and employment

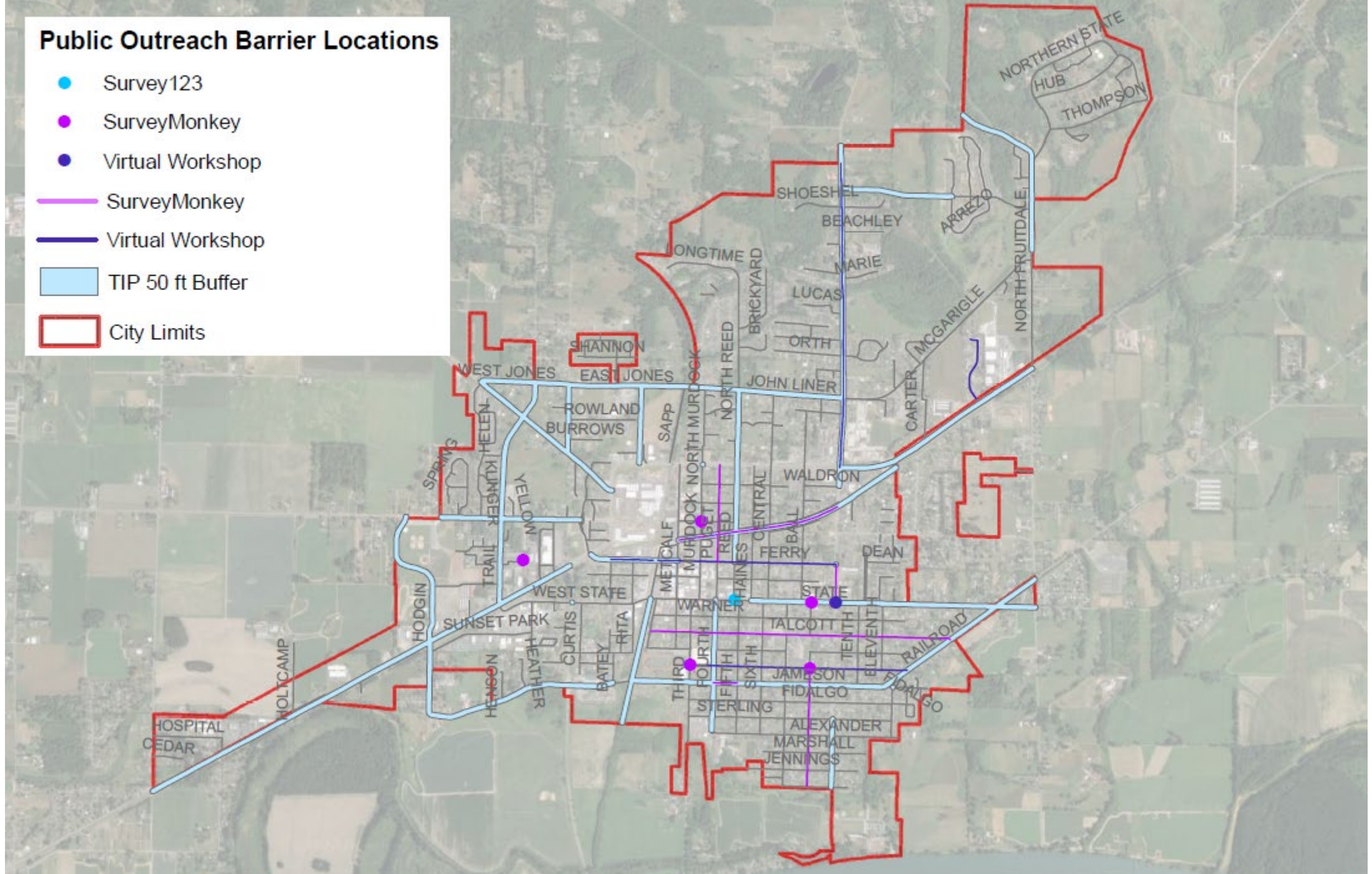
# Public Outreach Barrier Locations

- Survey123
- SurveyMonkey
- Virtual Workshop
- SurveyMonkey
- Virtual Workshop
- ▭ City Limits



# Public Outreach Barrier Locations

- Survey123
- SurveyMonkey
- Virtual Workshop
- SurveyMonkey
- Virtual Workshop
- ▭ TIP 50 ft Buffer
- ▭ City Limits



## Top Priority Barrier Types – Ranked Comparison

Rank	SurveyMonkey (23 responses)	Score	Rank	ArcGIS Survey123 (3 responses)	Score
1	<b>Fixed Objects Blocking Path of Travel, Overgrown Vegetation in Path of Travel, Sidewalk Cracks/Bumps</b>	4	1	Missing Pedestrian Crossings	5.5
2	Missing Curb Ramps	3.86	2	Missing Accessible Pedestrian Signals	4.5
3	Missing Accessible Pedestrian Signals	2.57	3	Missing Curb Ramps	3.5
4	Missing Pedestrian Crossings	2.55	4	<b>Sidewalk Cracks/Bumps</b>	3
5			5	<b>Fixed Objects Blocking Path of Travel</b>	3
6			6	<b>Overgrown Vegetation in Path of Travel</b>	1.5

# Top Priority Locations – Ranked Comparison

Rank	SurveyMonkey (22 responses)	Score	Rank	ArcGIS Survey123 (3 responses)	Score
1	Grocery Stores/Retail Shopping Centers	5.09	1	Schools/Libraries	6
2	Transit Centers/Stops/Routes	4.81	2	Senior Center/Elderly Care Facilities	5.5
3	Senior Center/Elderly Care Facilities	4.64	3	Grocery Stores/Retail Shopping Centers	5
4	Schools/Libraries	4.33	4	Transit Centers/Stops/Routes	4.5
5	<b>Local Government Buildings/Post Offices</b>	3.71	5	<b>Local Government Buildings/Post Offices, Parks/Trails</b>	3
6	<b>Parks/Trails</b>	3.45	6	<b>My residence</b>	1.5
7	<b>My residence</b>	1.86	7		



## Key Takeaways

- Barriers identified were primarily in area south of SR-20 in residential areas
- Narrative responses identified barriers in proximity to schools
- State and Township intersection barriers identified by respondents on both surveys and virtual workshop

# Current Activities

- Building Facilities Evaluations
- Parks and Trails Evaluations

# Public Comments

# Next Meeting

Tuesday, January 12, 2020 at 4pm via Zoom